

AENC-NG-CNS-REP-0247

Norwich to Tilbury

Volume 8: Examination Documents

**Document: 8.3.31 Draft Statement of Common Ground - SRC Group
(Sheepcote Quarry) - Clean Version**

Final Issue B

May 2026

Planning Inspectorate Reference: EN020027

nationalgrid

Revision History

Version	Date	Submitted at
A	26 February 2026	Deadline 1
B	12 May 2026	Deadline 4

SRC Group (Sheepcote Quarry)

Draft Statement of Common Ground

1. Purpose of the Statement of Common Ground

This Statement of Common Ground (SoCG) has been prepared to outline the areas of agreement and any remaining points of discussion between National Grid and SRC Group regarding specific issues arising during construction and/or operation from the interface between the proposed Norwich to Tilbury Project and Sheepcote Quarry, Braintree Road, Little Waltham, Chelmsford, Essex, CM3 3LD. The aim is to clarify the shared understanding of any issues and facilitate an efficient resolution process.

2. Parties to the SoCG

This SoCG is agreed between National Grid (NG) and SRC Group (SRC).

3. Summary of matters under discussion

As requested by the Examining Authority, the below table provides an 'at a glance' summary of matters which are under discussion, together with a deadline by which such matters are expected to be resolved.

SoCG ID	Summary of matter under discussion	Deadline for resolution
7.1	Detailed construction and operational information, including timings and accumulative environmental assessment.	Likely beyond deadline 7.
7.2	Detailed construction information and a cumulative environmental assessment to assess whether access can be safely maintained during utility installation works	Likely beyond deadline 7

4. Background

4.1 Description of the Project/Development

National Grid Electricity Transmission plc ('National Grid') owns and maintains the national high voltage electricity transmission network throughout England and Wales. The transmission network connects the power from where it is generated to the regional Distribution Network Operators who then supply businesses and homes.

National Grid holds the Transmission Licence for England and Wales, and its statutory duty is to develop and maintain an efficient, coordinated and economical system of electricity transmission and to facilitate competition in the generation and supply of electricity, as set out in the Electricity Act 1989.

National Grid has developed plans for Norwich to Tilbury (referred to as the 'Project'). The Project would support the UK's net zero target through the connection of new low carbon energy generation in East Anglia and by reinforcing the transmission network.

The Project comprises reinforcement of the transmission network between the existing Norwich Main Substation in Norfolk and Tilbury Substation in Essex, via Bramford Substation, the new East Anglia Connection Node (EACN) Substation and the new Tilbury North Substation.

The reinforcement is needed because the existing transmission network, even with current upgrading, will not have sufficient capacity for the new renewable energy (a substantial proportion of which would be generated by offshore wind) that is expected to connect to the network over the next 10 years and beyond. Completion of the Project, together with other new reinforcements across the country, will meet this future energy transmission demand both in East Anglia and across the UK.

The Project is a Nationally Significant Infrastructure Project (NSIP), and National Grid is seeking development consent under statutory procedures set by government. NSIPs are projects of certain types, over a certain size, which are considered by the government to be of national importance, hence permission to build them needs to be given at a national level, by the relevant Secretary of State (in this case the Secretary of State for Energy Security and Net Zero). Instead of applying to the local authority for planning permission, the developer must apply to the Planning Inspectorate for a Development Consent Order (DCO) that would grant development consent.

National Grid will submit an application for development consent to the Planning Inspectorate. The Examining Authority (consisting of one or more examining inspectors), after a period of public examination, would make their recommendation to the Secretary of State for Energy Security and Net Zero, who in turn would decide on whether development consent should be granted for the Project.

The Project is identified as critical to delivering a network which supports the clean power pathways for 2030 delivery.

The Planning Act 2008 places duties on National Grid as the DCO applicant to consult with prescribed or affected persons as well as to take account of responses to consultation and publicity. In accordance with these statutory requirements, National Grid has undertaken two non-statutory and one statutory consultation to inform its proposals, with further recent targeted consultations.

5. Stakeholder Interests

SRC Group has legal interests that have the potential to interact with the Norwich to Tilbury proposals. This has been identified as Sheepcote Quarry, Braintree Road, Little Waltham, Chelmsford, Essex, CM3 3LD.

National Grid is seeking to ensure that the interests of both parties and how they may be affected by the interaction are understood. From this position the aim is for the parties to agree actions to avoid or reduce the implications and for any remedial measures to be agreed. On this basis we seek the input from SRC Group to demonstrate how their interests may be affected, how SRC Group or National Grid and its contractors can collectively reduce those effects and input to agree the implementation of such measures.

Discussions Held

Teams Meeting Date: 29th April 2025

The parties continue to engage through regular email correspondence in relation to the matters described in this Statement of Common Ground.

6. Matters Agreed

ID	Issue	Agreement reached	Date agreed	Relevant documentation
6.1				

7. Matters Currently Under Discussion

ID	Issue	National Grid Position	Stakeholder Position	Status
7.1	Maintaining Safe Access to the Public Highway	<p>The Applicant intends to use the existing Sheepcote Quarry access and form its haul road from this point.</p> <p>The Applicant acknowledges the need for a design that maintains safe and continuous access for quarry operations and DCO related traffic, and for ensuring that the access road is kept to an appropriate standard.</p>	<p>The importance of continued access to the stakeholder site is emphasised. However subject to appropriate agreement it is agreed that shared use and access for National Grid has the potential to be accommodated without materially influencing SRC's business or prejudicing it. Further SRC would need to be satisfied that the Cumulative Environmental Effects of SRC's existing and future operations at Sheepcotes Quarry in conjunction with the DCO will be acceptable at this location.</p>	<p>NG to provide detailed information in respect of the construction and built scenarios, including timings of works and events.</p> <p>NG to also provide a Cumulative Environmental Assessment to deal with existing and proposed SRC operations in conjunction with the DCO. Thereafter,</p>

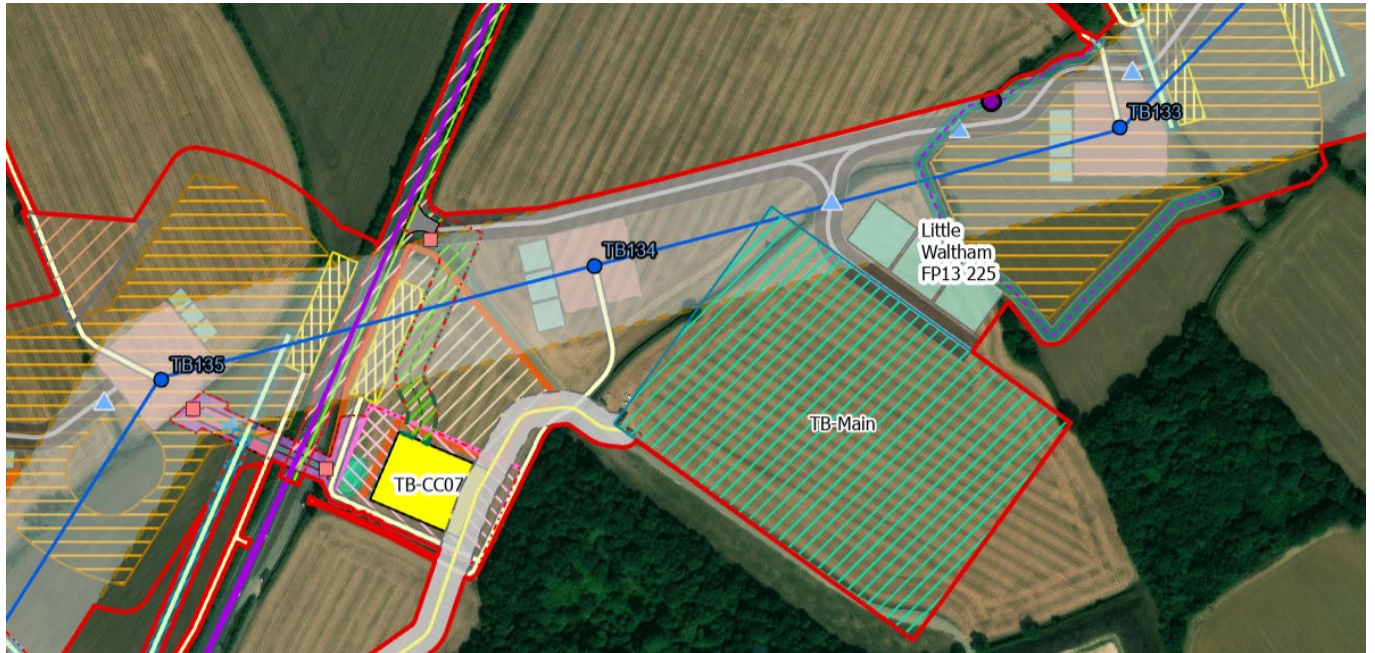
ID	Issue	National Grid Position	Stakeholder Position	Status
				<p>SRC is willing to consider the information provided and revert to NG.</p> <p>Thereafter, subject to suitability and applicability of the information provided SRC will consider, terms and form of agreement to be developed, in the first instance, by NG.</p>
7.2	Maintaining Access during installation of utilities connections	<p>The Applicant acknowledges that the proposed utilities connections to the Norwich-Tilbury compound will cross the Sheepcote quarry access.</p> <p>The Applicant will liaise with the quarry operator during detailed design to ensure quarry access is maintained.</p>	<p>The importance of continued access to the stakeholder site and potential extensions is emphasised. However subject to appropriate agreement it is likely that suitable crossing arrangements could be established.</p>	<p>NG to provide detailed information in respect of the construction and built scenarios, including timings of works and events. NG to also provide a Cumulative Environmental Assessment to deal with existing and</p>

ID	Issue	National Grid Position	Stakeholder Position	Status
				<p>proposed SRC operations in conjunction with the DCO. Thereafter, SRC is willing to consider the information provided and revert to NG.</p> <p>Thereafter, subject to suitability and applicability of the information provided SRC will consider, terms and form of agreement to be developed, in the first instance, by NG.</p>

The parties agree to:

- Commit to engage constructively with other parties in respect of detailed engineering design to facilitate beneficial outcomes for all developments in so far as it relates to overlapping interests
- Commit to update the other parties where material change to their project occurs or is imminently expected

Figure 1 Interaction between TB133 to TB135



8. Signatures

This Statement of Common Ground is agreed upon by the undersigned parties:

For National Grid

Name: _____

Position: _____

Date: _____

For SRC Group

Name: _____

Position: _____

Date: _____

National Grid plc
National Grid House,
Warwick Technology Park,
Gallows Hill, Warwick.
CV34 6DA United Kingdom

Registered in England and Wales
No. 4031152
nationalgrid.com